

## REPORT ON MOBILITY AND CONNECTIVITY OF STUDENTS OF B.COM

-Compiled by Ms. Manasa J with inputs given by Ms. Ramya N

**INTRODUCTION:** In the backdrop of COVID 19 and the lockdown, with no personal/campus interaction with students, Department of Commerce, conducted an Online Survey and administered simple, structured Questionnaire to the I and II year students of B.Com and B.Com Vocational courses on 20<sup>th</sup> May, 2020 in order to obtain an idea about their mode of transport and devices available for connectivity.

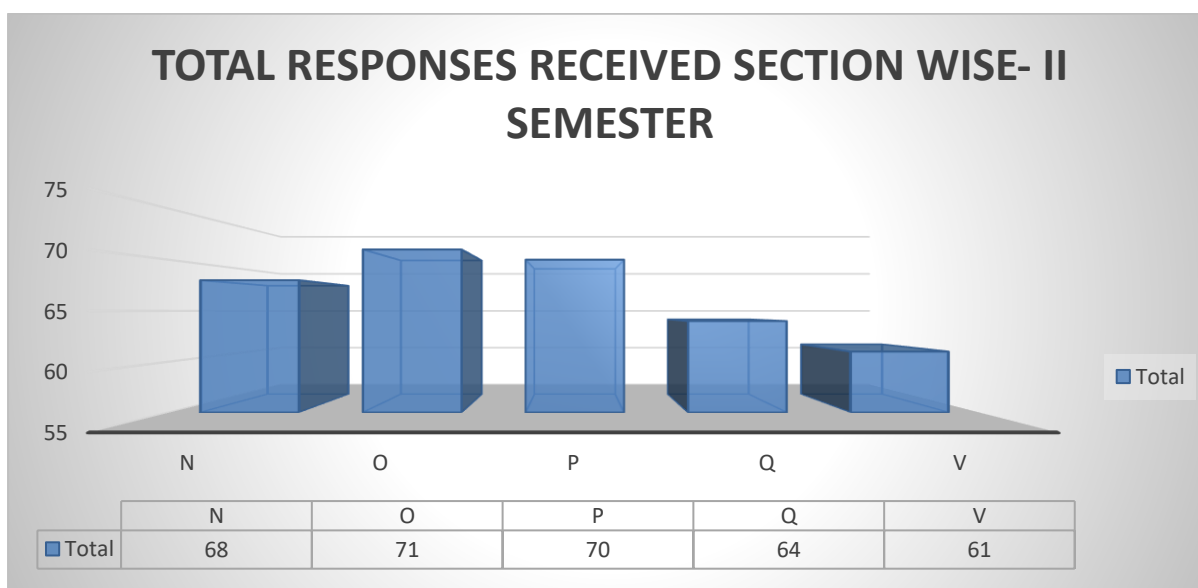
The survey revealed that an overwhelming majority of student respondents depend on BMTC buses for their commute to college. Online connectivity is restricted to a few as the majority of students do not have a laptop at home. However, the respondents do have a smartphone.

### OBJECTIVES:

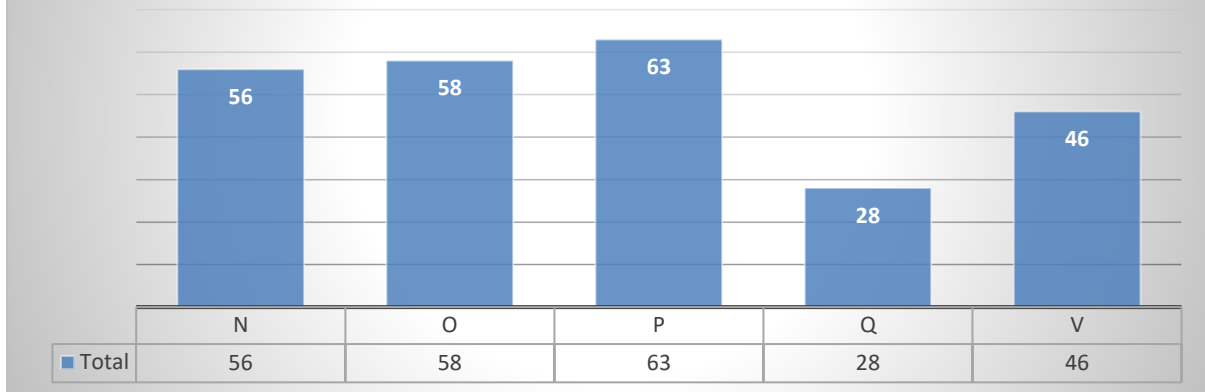
1. To collect data on mode of transport of students
2. To gather data on internet connectivity from respondents

### SAMPLE SIZE

| SECTION      | II SEMESTER     |                  | IV SEMESTER     |                  |
|--------------|-----------------|------------------|-----------------|------------------|
|              | ACTUAL STRENGTH | ACTUAL RESPONSES | ACTUAL STRENGTH | ACTUAL RESPONSES |
| N            | 72              | 68               | 60              | 56               |
| O            | 73              | 71               | 63              | 58               |
| P            | 74              | 70               | 63              | 63               |
| Q            | 73              | 64               | 61              | 28               |
| V            | 63              | 61               | 47              | 46               |
| <b>TOTAL</b> | <b>355</b>      | <b>334</b>       | <b>294</b>      | <b>251</b>       |

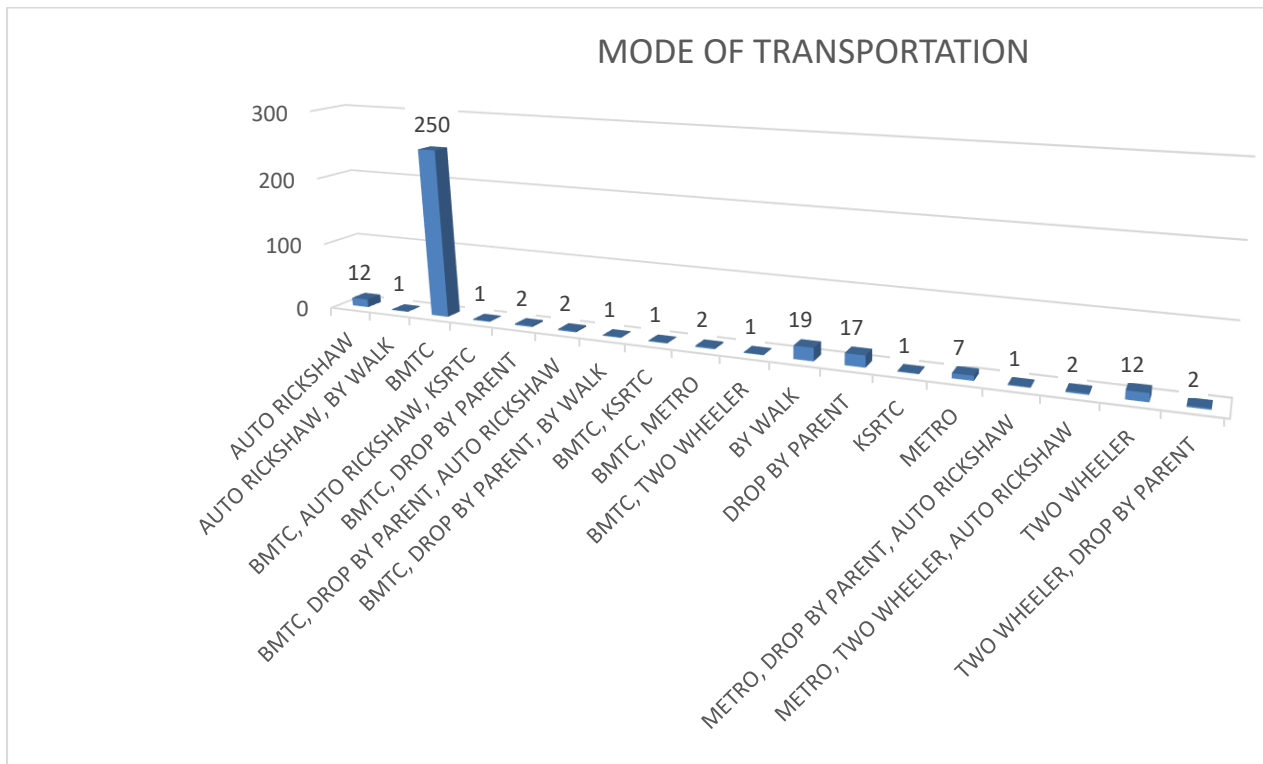


## TOTAL RESPONSES RECEIVED SECTION WISE- IV SEMESTER



### DATA ANALYSIS AND INTERPRETATION

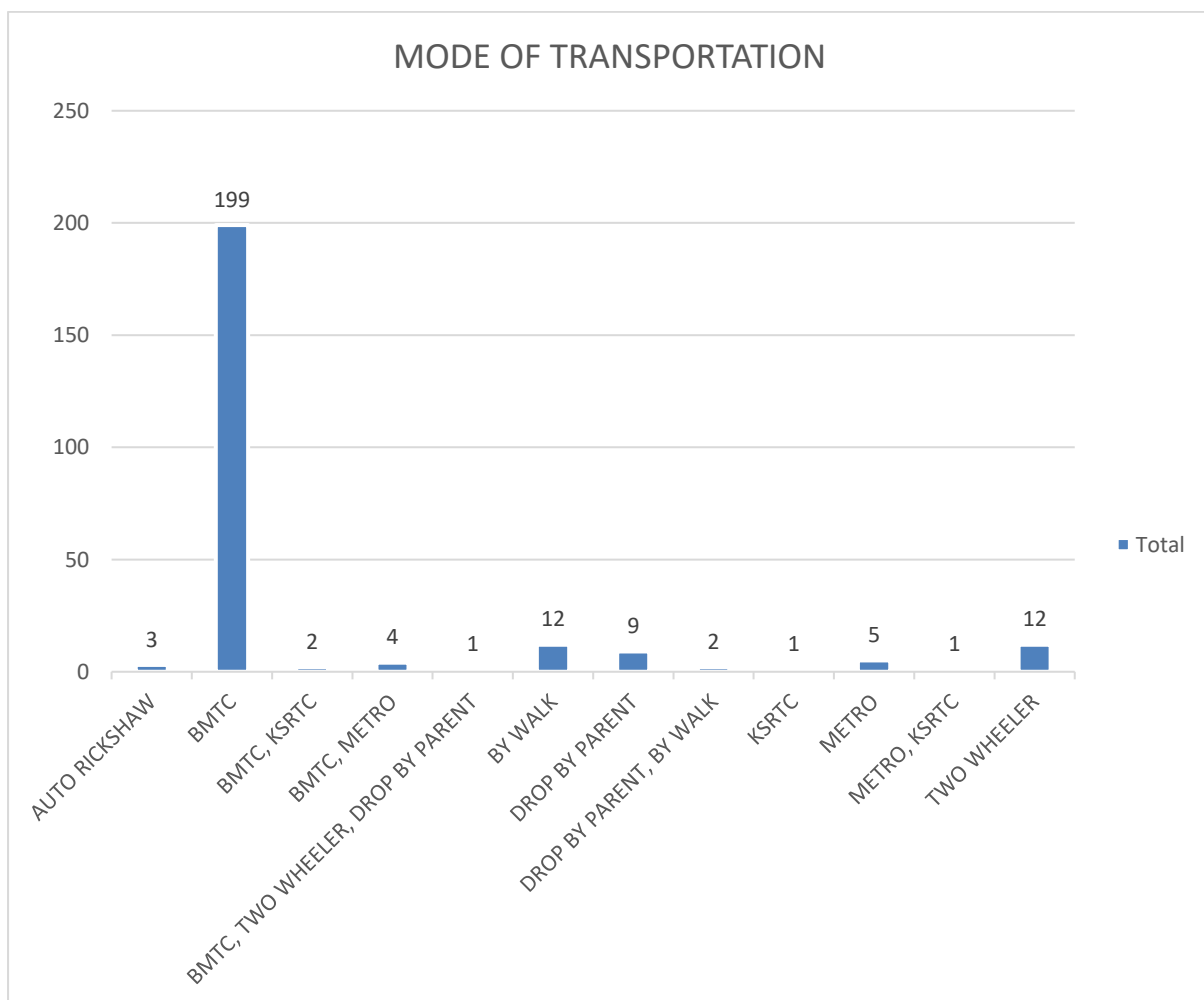
#### **Question 1: WHAT IS YOUR MODE OF TRANSPORTATION TO AND FROM COLLEGE?**



Of the student respondents surveyed, around 250 students (74.85%) avail BMTC Bus services to commute to college every day, while 19 students (5.69%) come by walk to college. 17 students (5.09%) are dropped by parents to college while the number of students who depend on auto rickshaw and two wheeler are 12 each (3.59% each). 7 students (2.10%) avail Metro services to commute to college while 1 student (0.3%) avails KSTRC services.

No. of students who have access to more than one of the modes of transportation

| Sl. No | Mode of transportation               | No. of Students | Percentage |
|--------|--------------------------------------|-----------------|------------|
| 1      | BMTC, DROP BY PARENT                 | 02              | 0.60%      |
| 2      | BMTC, DROP BY PARENT, AUTO RICKSHAW  | 02              | 0.60%      |
| 3      | BMTC, METRO                          | 02              | 0.60%      |
| 4      | METRO, TWO WHEELER, AUTO RICKSHAW    | 02              | 0.60%      |
| 5      | TWO WHEELER, DROP BY PARENT          | 02              | 0.60%      |
| 6      | AUTO RICKSHAW, BY WALK               | 01              | 0.30%      |
| 7      | BMTC, AUTO RICKSHAW, KSRTC           | 01              | 0.30%      |
| 8      | BMTC, DROP BY PARENT, BY WALK        | 01              | 0.30%      |
| 9      | BMTC, KSRTC                          | 01              | 0.30%      |
| 10     | BMTC, TWO WHEELER                    | 01              | 0.30%      |
| 11     | METRO, DROP BY PARENT, AUTO RICKSHAW | 01              | 0.30%      |

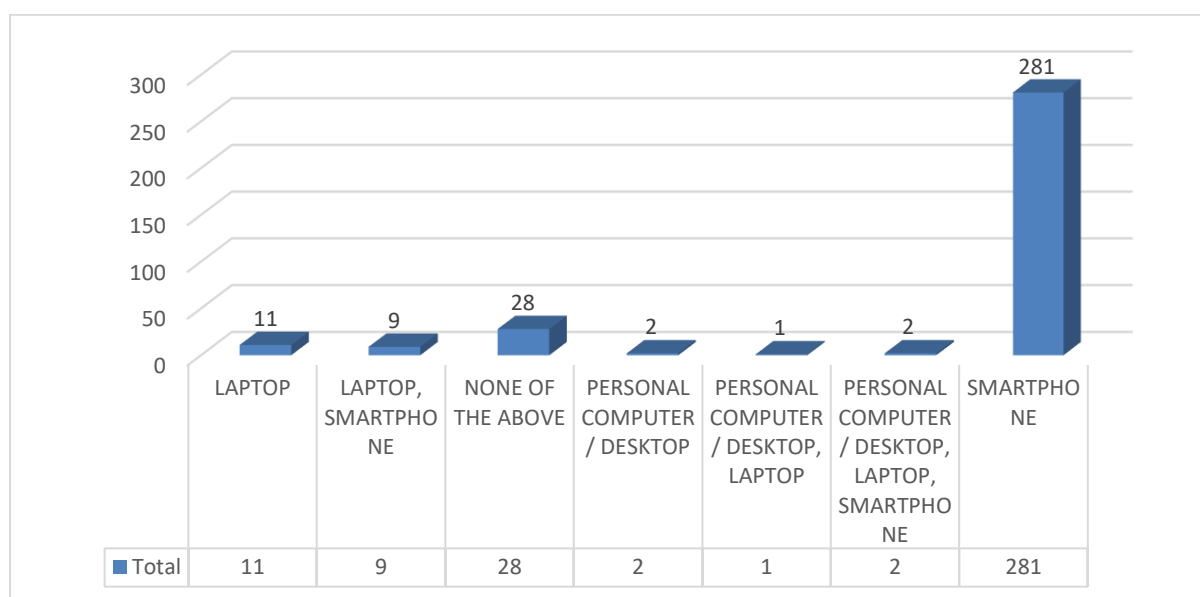


In case of IV Semester students, around 79.28% (199) students avail BMTC Bus services, while the percentage of students who are dependent on two wheelers and come by walk to college are 4.78% each (12 each). Around 3.59% (09) of students are dropped by parents, 1.99% (5) utilize the METRO services and 1.20% (03) of student respondents depend on Auto Rickshaw. About 0.40% (01) depend on KSRTC bus services.

No. of students who have access to more than one of the modes of transportation

| Sl. No | Mode of transportation            | No. of Students | Percentage |
|--------|-----------------------------------|-----------------|------------|
| 1      | BMTC, KSRTC                       | 02              | 0.80%      |
| 2      | BMTC, METRO                       | 04              | 1.59%      |
| 3      | BMTC, TWO WHEELER, DROP BY PARENT | 01              | 0.40%      |
| 4      | DROP BY PARENT, BY WALK           | 02              | 0.80%      |
| 5      | METRO, KSRTC                      | 01              | 0.40%      |

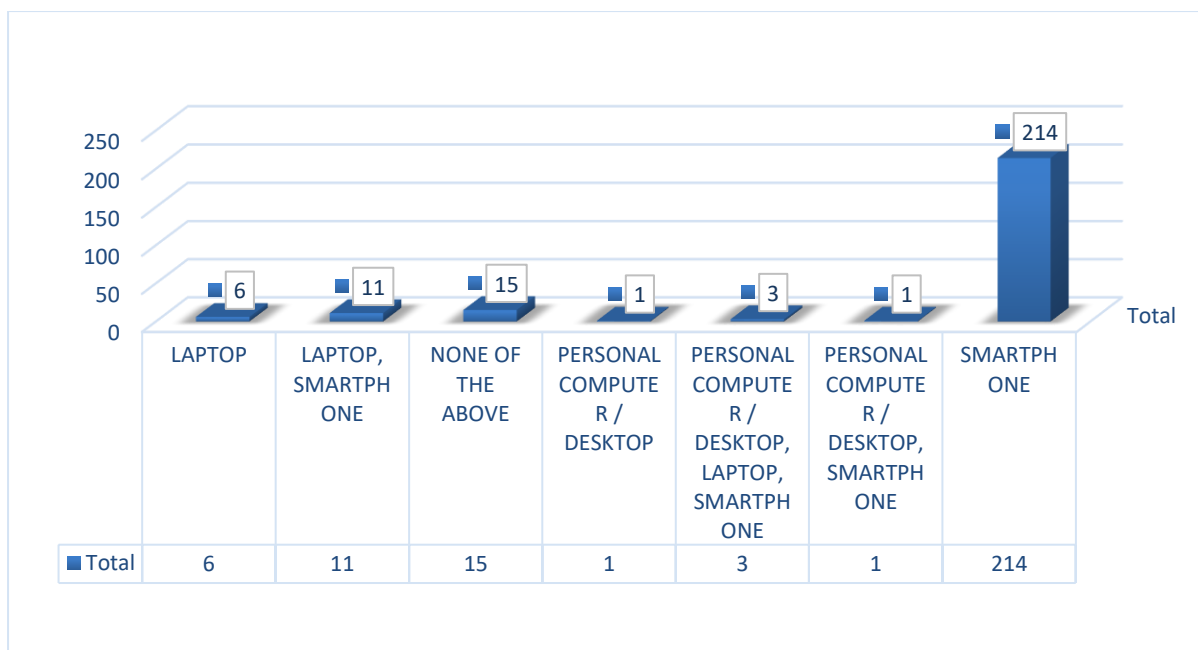
### QUESTION 2: DO YOU HAVE?



For the second question, “Do You have?”, where options were given as smartphones, laptop, personal computer/Desktop, around 281 student (84.13%) respondents possess Smartphones, 11 students (3.29%) have laptops and 2 students (0.60%) have personal computer/desktop. Around 28 (8.38%) student respondents said that they don’t have any of the electronic devices mentioned in the questionnaire.

No. of Students who possess more than one of the above mentioned devices

| Sl no | Name of the Devices                           | No. of Students | Percentage |
|-------|---|-----------------|------------|
| 1     | LAPTOP , SMARTPHONE                           | 09              | 2.65%      |
| 2     | PERSONAL COMPUTER/DESKTOP, LAPTOP             | 01              | 0.30%      |
| 3     | PERSONAL COMPUTER/DESKTOP, LAPTOP, SMARTPHONE | 02              | 0.60%      |

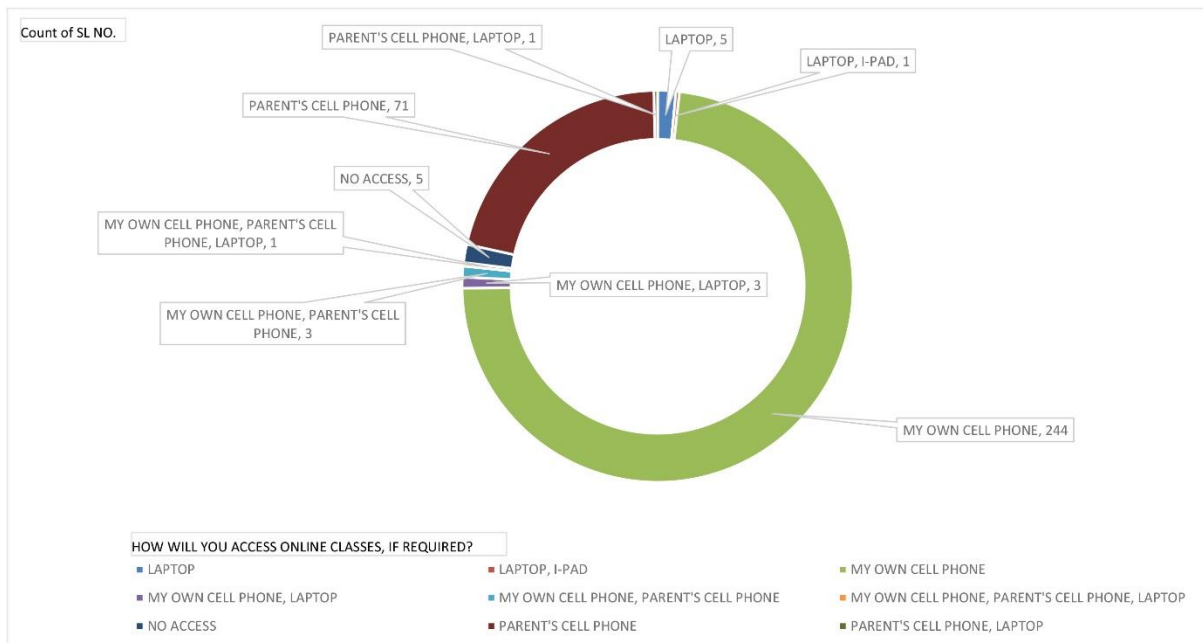


Amongst the IV Semester student respondents, 214 student respondents, i.e 85.26% of total respondents have smartphones, 6 students (2.39%) have laptops and 1 student (0.40%) has personal computer/desktop. Around 15 students (5.98%) do not have access to any other electronic devices mentioned in the questionnaire.

No. of students who have access to more than one of the devices mentioned above:

| Sl no | Name of the Devices                   | No. of Students | Percentage |
|-------|---------------------------------------|-----------------|------------|
| 1     | LAPTOP , SMARTPHONE                   | 11              | 4.38%      |
| 2     | PERSONAL COMPUTER/DESKTOP, LAPTOP     | 03              | 1.20%      |
| 3     | PERSONAL COMPUTER/DESKTOP, SMARTPHONE | 01              | 0.40%      |

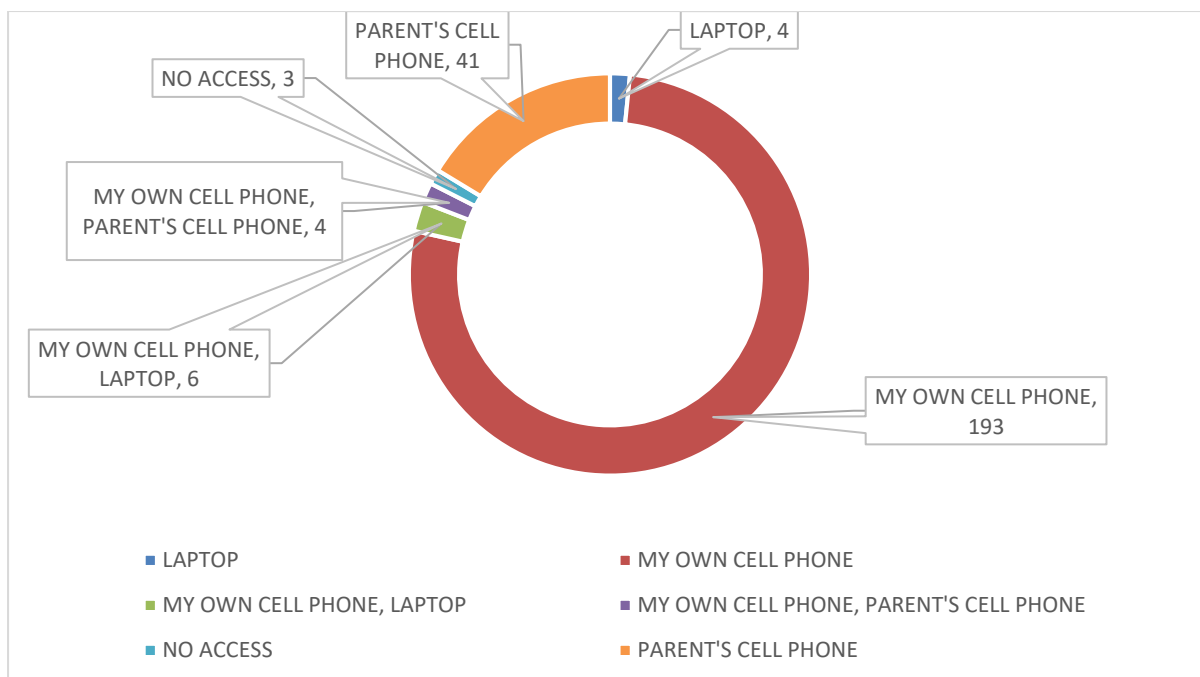
### QUESTION 3: HOW WILL YOU ACCESS ONLINE CLASSES, IF REQUIRED?



For the 3<sup>rd</sup> question, “How will you access online classes, if required?”, amongst the II Semester student respondents 244 student respondents (73.05%) said they can access through their own cell phones, while 71 students (21.26%) said they can access through their parent’s cell phone. 5 student respondents (1.50%) said they can access online classes through Laptop. Only 5 students (1.50%) said that they don’t have any access to online classes.

No. of students who can access online classes through more than one of the devices mentioned in the questionnaire

| Sl. No | Name of the devices                            | No. of Students | Percentage |
|--------|--|-----------------|------------|
| 1      | LAPTOP, I-PAD                                  | 01              | 0.30%      |
| 2      | MY OWN CELL PHONE, LAPTOP                      | 03              | 0.90%      |
| 3      | MY OWN CELL PHONE, PARENT'S CELL PHONE         | 03              | 0.90%      |
| 4      | MY OWN CELL PHONE, PARENT'S CELL PHONE, LAPTOP | 01              | 0.30%      |
| 5      | PARENT'S CELL PHONE, LAPTOP                    | 01              | 0.30%      |



Amongst the IV Semester student respondents, 193 students (76.89%) said that they can access online classes through their own cell phones, while 41 students (16.33%) said they can access through their parent's cell phone. 4 student respondents (1.59%) said that they can access online classes through laptops. 3 students (1.20%) said they do not have access to any of the devices mentioned in the questionnaire.

No. of Students having access to more than one device mentioned above:

| Sl. No | Name of the devices                    | No. of students | Percentage |
|--------|--|-----------------|------------|
| 1      | MY OWN CELL PHONE, LAPTOP              | 06              | 2.39%      |
| 2      | MY OWN CELL PHONE, PARENT'S CELL PHONE | 04              | 1.59%      |

### **FINDINGS:**

Of the total student strength of 649, 90% participated in the survey. The Key findings are:

1. 76% of students depend on BMTC buses for daily commute to college. The percentage of students using any other mode of transportation is negligible.
2. 85% of students have a smartphone. Only 2.9% of students have laptop. Students with access to PC/Desktop constitute 0.51%. 3.41% of students have Laptop and Smartphone. 0.68% of students have PC/Desktop and Laptop. 0.51% have PC/ Desktop, Laptop and Smartphone.

### **INTERPRETATIONS AND CONCLUSION**

The results of the survey, unveils the fact that 76% students are dependent on public transport like BMTC, 10% students are dropped by parents and very smaller group is using other modes like metro, own vehicles etc

The next factor examined was the connectivity to the virtual mode of teaching. It is pertinent to note that 85% students are utilising smart phones and only 15% have both laptops and smart phones. Another dimension of the same variable assessed is accessibility to the online classes, in which 74% students access through their personal smart phones, 21% students are dependent on parents phones and 5% are lack access to online classes.

To sum up, our student respondents primarily depend on public transport for their commute. While the respondents use a smartphone, the majority lack connectivity through laptop/desktop. Thus, their access to internet connectivity is limited to smartphone.